

ARKANSAS SOUTH REGION ORCHESTRA

JUNIOR HIGH STRING AUDITION MATERIALS ~ SET I (2023)

There are two junior high performing groups at the South Region Orchestra Clinic. The top players in each section according to rank earn a seat in the Junior High Concert Orchestra, which utilizes 16 Violin I, 16 Violin II, 10 Viola, 10 Cello, and Basses TBD, as well as a full complement of winds, brass, and percussion for a full symphonic orchestral experience. The difficulty of the music is typically what students might encounter in their third year of playing.

AUDITION MATERIAL: All printed fingerings and bowings are required. All instruments have the first two pieces listed in common. The third piece is a solo or orchestral excerpt specific for that instrument.

SET I (2023)

- 1) The Hope
- 2) The Roller Coaster
- 3) Violin: Mozart: Symphony No. 36 "Linz" – 4th Mvt.
Viola: Tchaikovsky: Symphony No. 4 – Finale
Cello: Vivaldi: Sonata No. 5 in e minor – 2nd Mvt.
Bass: Beethoven: Symphony No. 3 "Eroica" – Finale

SCALES

Required scales are those with key signatures three sharps through three flats. All scales are to be played as detaché (smooth and connected) quarter notes at 80 beats per minute with the top note repeated, NO VIBRATO, and only in the octave(s) designated on the scale sheet. Only one major scale and one minor scale will be chosen from the following list:

- Major Scales – TWO octaves: A, D, G, C, F, Bb, Eb
- NATURAL Minor Scales – ONE octave: f#, b, e, a, d, g, c

SIGHTREADING

All students will be required to sightread as part of their audition. Students will have 20 seconds to look over the sightreading material, during which they may not make any sound on their instruments. At the conclusion of the 20 seconds, the judge will ask the student to play the excerpt. Students are only allowed one attempt at the sightreading material.

For more information about audition procedures or the South Region Orchestra Clinic, please reference the appropriate documents posted on the South Region Orchestra website at southregionorchestra.weebly.com or the ASBOA website at www.asboa.org.

The Hope

Hebrew Melody

Violin

Moderato

mf

f

p

f

(3rd pos.) (1st pos.)

rit.

The score is for a violin in 4/4 time, marked 'Moderato'. It consists of three staves. The first staff begins with a treble clef, a key signature of one flat (B-flat), and a 4/4 time signature. The melody starts with a half note G4, followed by eighth notes A4, B-flat4, and A4, then a half note G4. A dynamic marking of *mf* is placed below the first measure. The second staff continues the melody with eighth notes F4, E4, and D4, followed by a half note C4. A dynamic marking of *f* is placed below the first measure of this staff. The third staff begins with a treble clef, a key signature of one flat, and a 4/4 time signature. It starts with a half note B-flat4, followed by eighth notes A4, G4, and F4, then a half note E4. A dynamic marking of *f* is placed below the first measure. The melody continues with eighth notes D4, C4, and B-flat4, then a half note A4. A dynamic marking of *p* is placed below the first measure of this staff. The score includes various musical notations such as slurs, ties, and dynamic markings. There are also performance instructions like '(3rd pos.)', '(1st pos.)', and '*rit.*'. The piece concludes with a double bar line and repeat signs.

The Roller Coaster

F. Wohlfahrt

Moderato

Violin

5

10

14

p

f

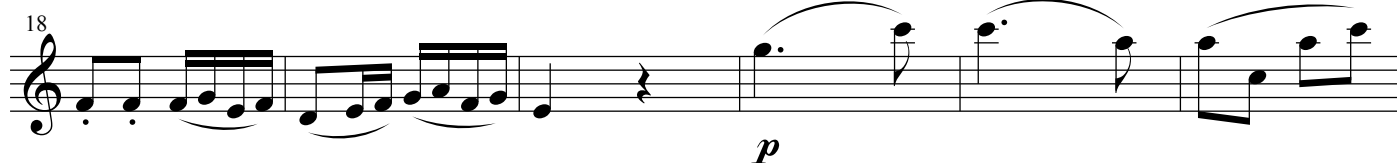
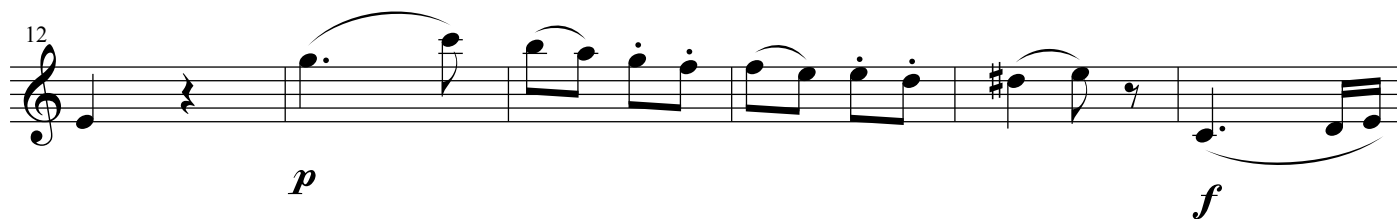
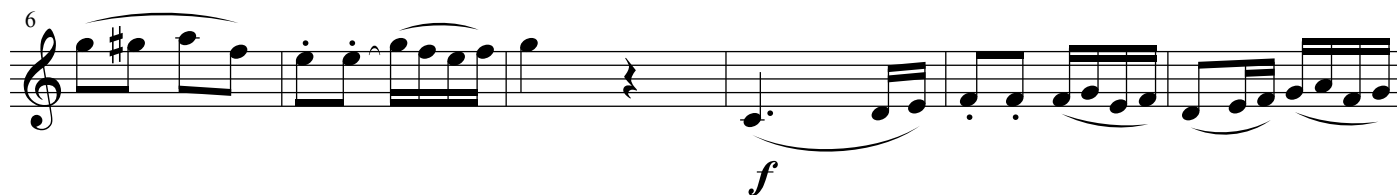
f

Symphony No. 36

Mozart

PRESTO

Violin



Violin Major Scales

South Region Orchestra

No vibrato, repeat top note, quarter note=80

Scales must be memorized.



Violin Natural Minor Scales

No vibrato, repeat top note, quarter note=80

South Region Orchestra

Scales must be memorized.

Scales should only be performed as printed; playing a different octave will result in a score deduction.

Violin



The sheet music displays six staves of violin natural minor scales, each consisting of 8 measures. The scales are written in treble clef with a 4/4 time signature. The first staff (scale 1) starts on G4 and ends on G#4. The second staff (scale 2) starts on A4 and ends on A#4. The third staff (scale 3) starts on B4 and ends on B#4. The fourth staff (scale 4) starts on C5 and ends on C#5. The fifth staff (scale 5) starts on D5 and ends on D#5. The sixth staff (scale 6) starts on E5 and ends on E#5. Each scale is marked with its starting measure number (1, 5, 9, 13, 17, 21) at the beginning of the staff. The scales are written in a sequence of natural minor scales, each starting on a different note and ending on the same note with a sharp. The scales are: 1. G4-A4-B4-C5-D5-E5-F#5-G#5, 2. A4-B4-C5-D5-E5-F#5-G#5-A#5, 3. B4-C5-D5-E5-F#5-G#5-A#5-B#5, 4. C5-D5-E5-F#5-G#5-A#5-B#5-C#5, 5. D5-E5-F#5-G#5-A#5-B#5-C#5-D#5, 6. E5-F#5-G#5-A#5-B#5-C#5-D#5-E#5.