

ARKANSAS SOUTH REGION ORCHESTRA

JUNIOR HIGH STRING AUDITION MATERIALS ~ SET III (2022)

There are two junior high performing groups at the South Region Orchestra Clinic. The top players in each section according to rank earn a seat in the Junior High Concert Orchestra, which utilizes 16 Violin I, 16 Violin II, 10 Viola, 10 Cello, and Basses TBD, as well as a full complement of winds, brass, and percussion for a full symphonic orchestral experience. The difficulty of the music is typically what students might encounter in their third year of playing.

AUDITION MATERIAL: All printed fingerings and bowings are required. All instruments have the first two pieces listed in common. The third piece is a solo or orchestral excerpt specific for that instrument.

SET III (2022)

- 1) Jeannie with the Light Brown Hair
- 2) Loch Lomond
- 3) Violin: Vivaldi: Concerto in a minor, 1st Movement
Viola: Telemann: Concerto in G Major, 2nd Movement
Cello: Bach, J.S.: Minuet I from Suite No. 1 in G Major
Bass: Saint-Saëns: "The Elephant" from *The Carnival of the Animals*

SCALES

Required scales are those with key signatures three sharps through three flats. All scales are to be played as detaché (smooth and connected) quarter notes at 80 beats per minute with the top note repeated, NO VIBRATO, and only in the octave(s) designated on the scale sheet. Only one major scale and one minor scale will be chosen from the following list:

- o Major Scales – TWO octaves: A, D, G, C, F, B \flat , E \flat
- o NATURAL Minor Scales – ONE octave: f \sharp , b, e, a, d, g, c

SIGHTREADING

All students will be required to sightread as part of their audition. Students will have 20 seconds to look over the sightreading material, during which they may not make any sound on their instruments. At the conclusion of the 20 seconds, the judge will ask the student to play the excerpt. Students are only allowed one attempt at the sightreading material.

For more information about audition procedures or the South Region Orchestra Clinic, please reference the appropriate documents posted on the South Region Orchestra website at southregionorchestra.weebly.com or the ASBOA website at www.asboa.org.

Jeannie with the Light Brown Hair

(shifting)

Set III

All fingerings are REQUIRED;
a - indicates a shift

Bass

p

f

p

rit.

Bass

Loch Lomond

Scottish Folk Song

♩ = 80
Andante
v

p *cresc.* *mf*

5

dim. *p* *f*

9

p

13

rit. *a tempo* *rit.*

The Elephant

from "The Carnival of the Animals"

Bass
Allegretto Pomposo

South Region Orchestra

♩ = 100

The first staff of music is in bass clef, 3/8 time, and B-flat major. It begins with a tempo marking of quarter note = 100. The melody starts with a quarter note G2, followed by eighth notes A2, Bb2, and C3. The piece features several accents (^) and a fermata over the final note of the first line.

10

The second staff of music continues the piece from measure 10. It includes accents (^), a dynamic marking of *V* (fortissimo), and a fermata over the final note of the second line. The piece concludes with a double bar line.

Bass Major Scales

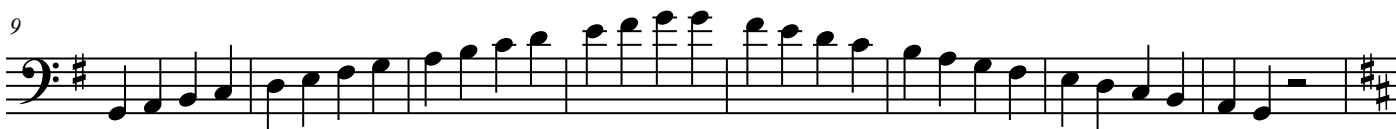
South Region Orchestra

No vibrato, repeat top note, quarter note=80
Scales must be memorized.

Contrabass



9



17



25



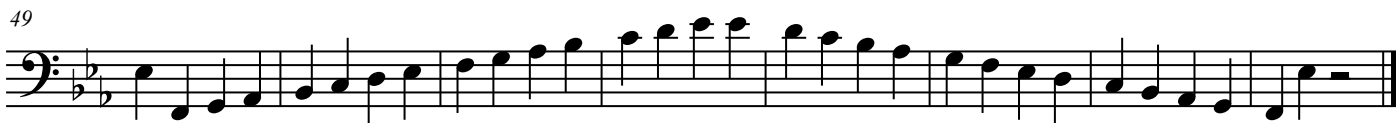
33



41



49



Bass Natural Minor Scales

No vibrato, repeat top note, quarter note=80

South Region Orchestra

Scales must be memorized.

Scales should only be performed as printed; playing a different octave will result in a score deduction.

Contrabass



5



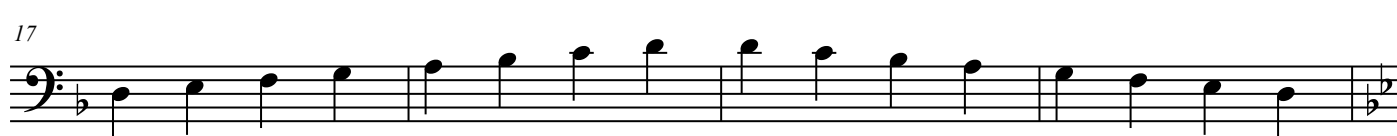
9



13



17



21



25

